



Australian Government

The Treasury

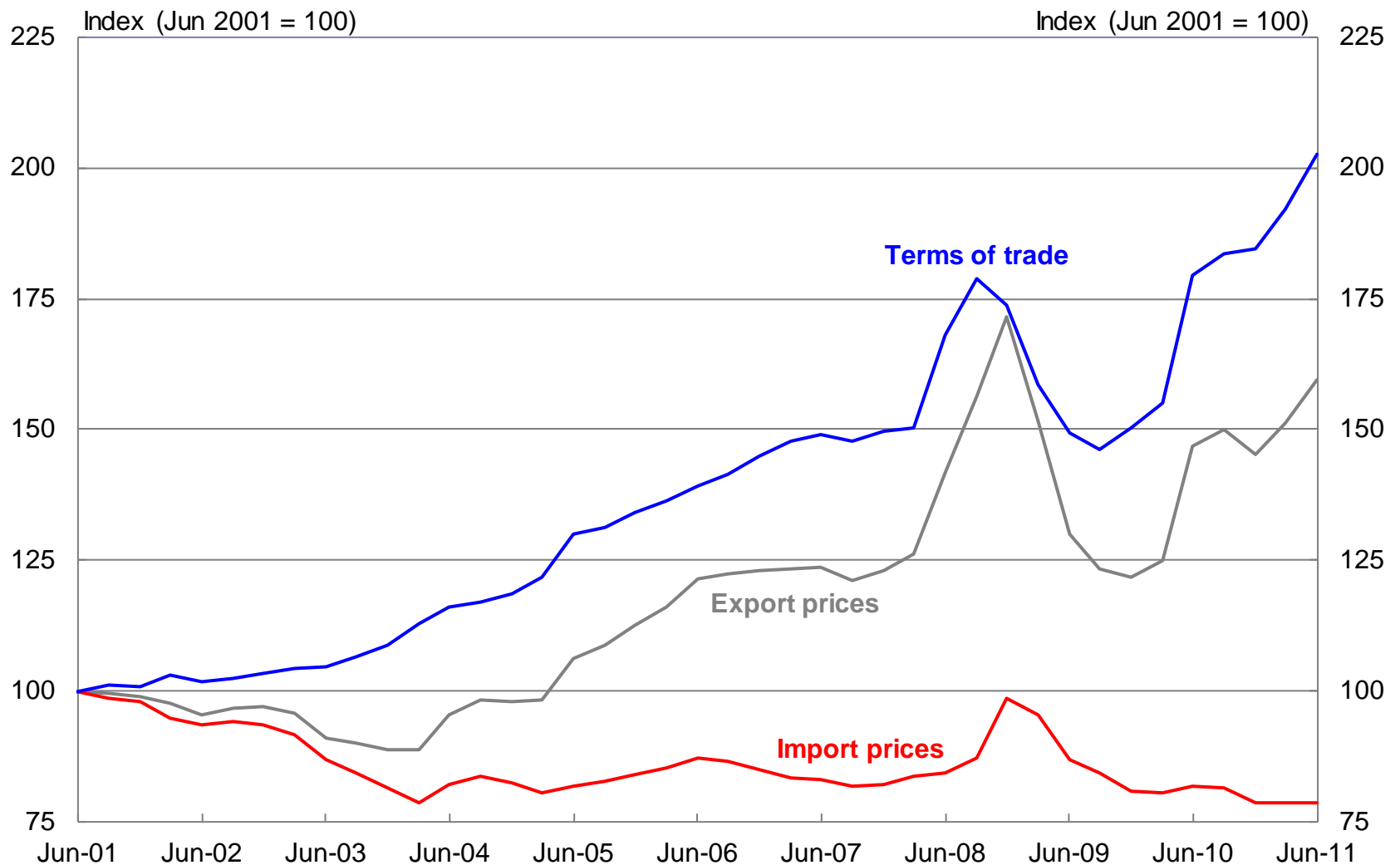
The implications of global economic transformations for Australia

Australian Industry Group Annual
National Forum

Monday 19 September 2011

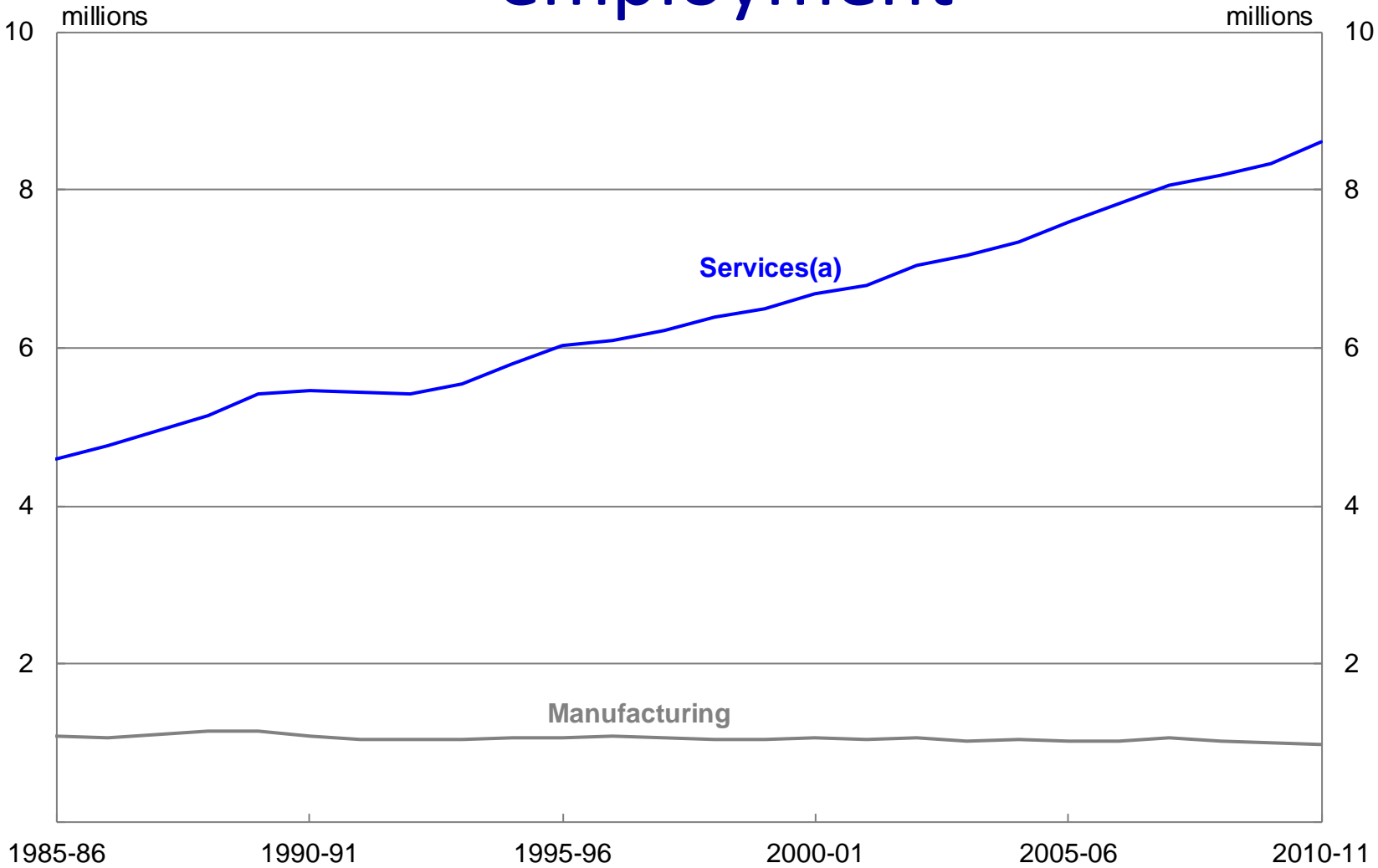
Dr Martin Parkinson PSM

Chart 1: Terms of trade



Note: Export and import price indices are denominated in Australian dollars and will reflect movements in the nominal exchange rate.
Source: ABS cat. no. 5302.0 and Treasury.

Chart 2: Manufacturing and services employment



(a) Excludes construction, electricity, gas, water and waste services
Source: ABS cat. no. 6291.0.55.003.

Chart 3: Share of Chinese industrial output

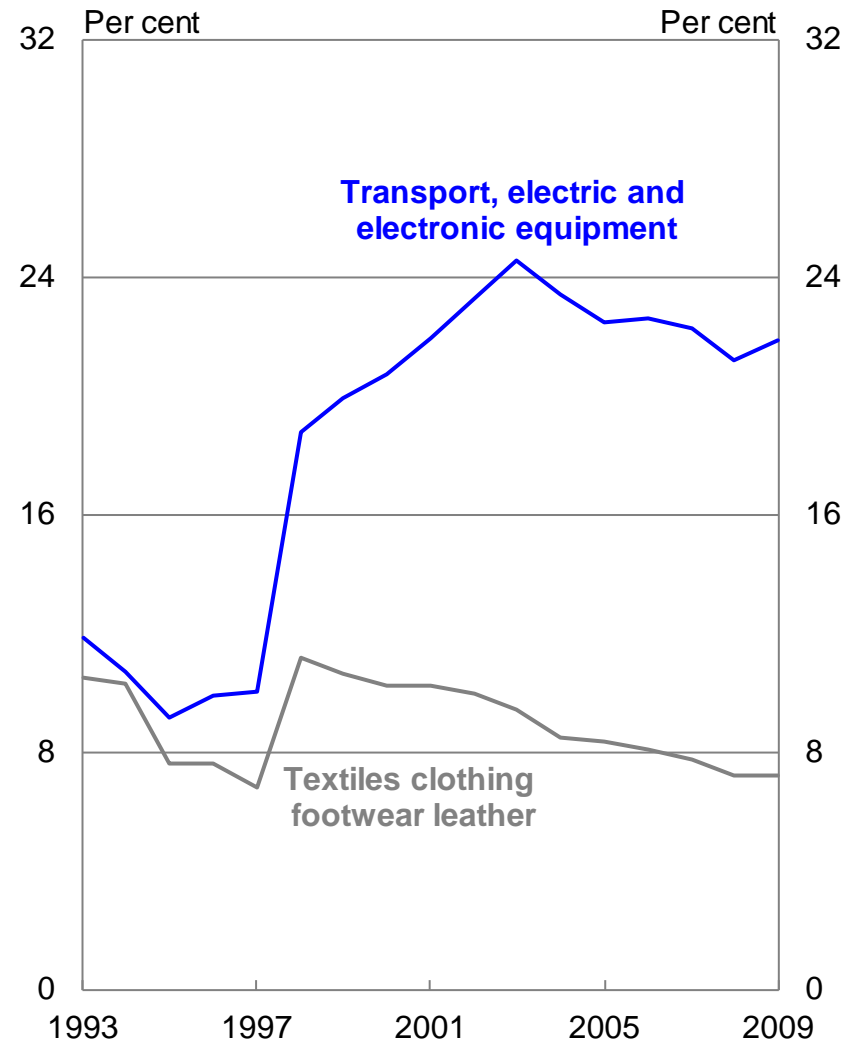
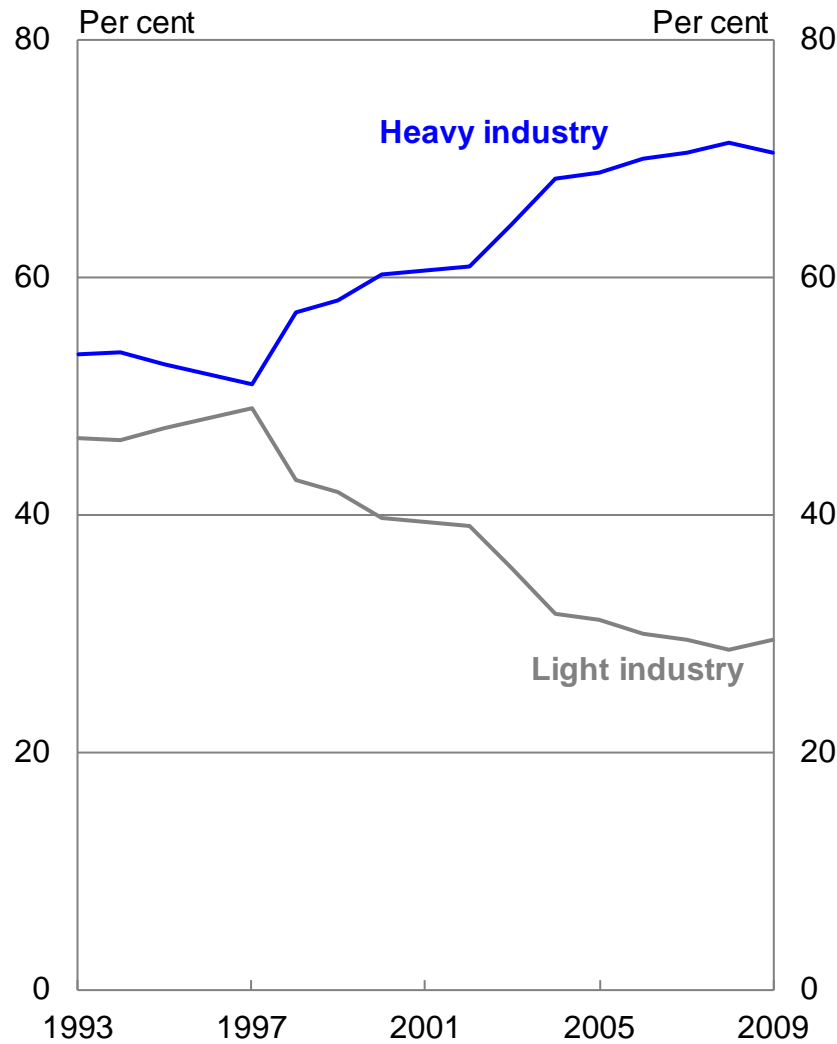
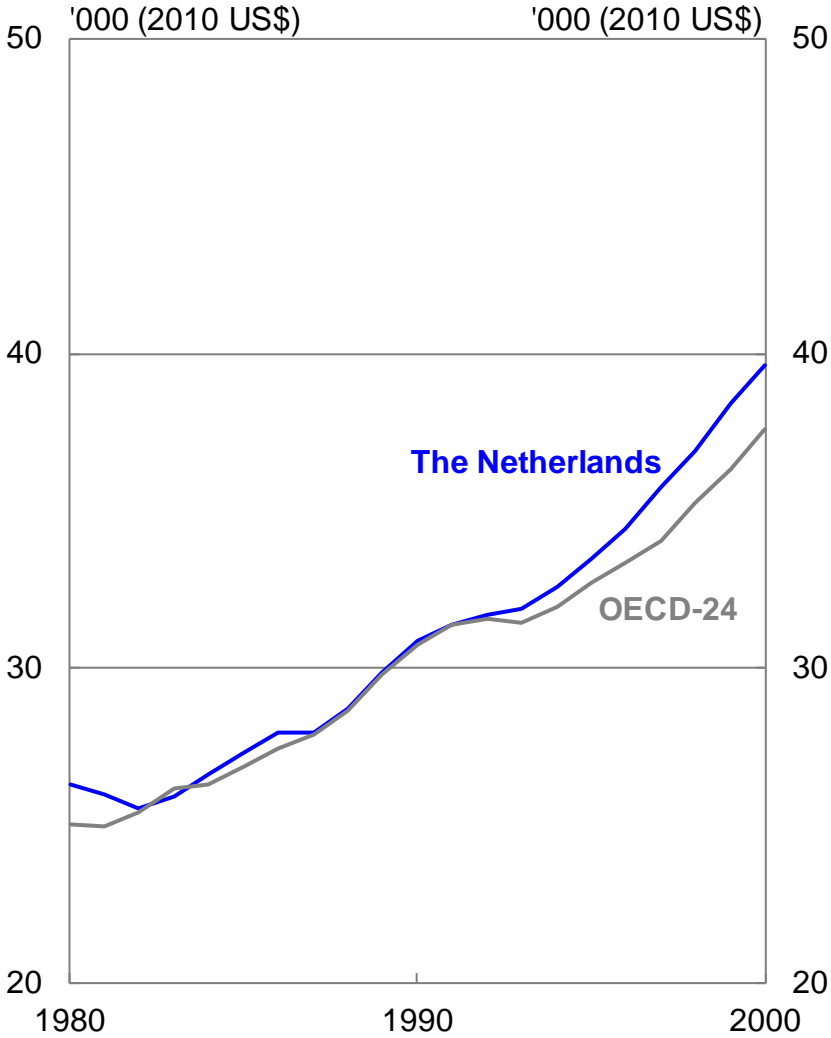
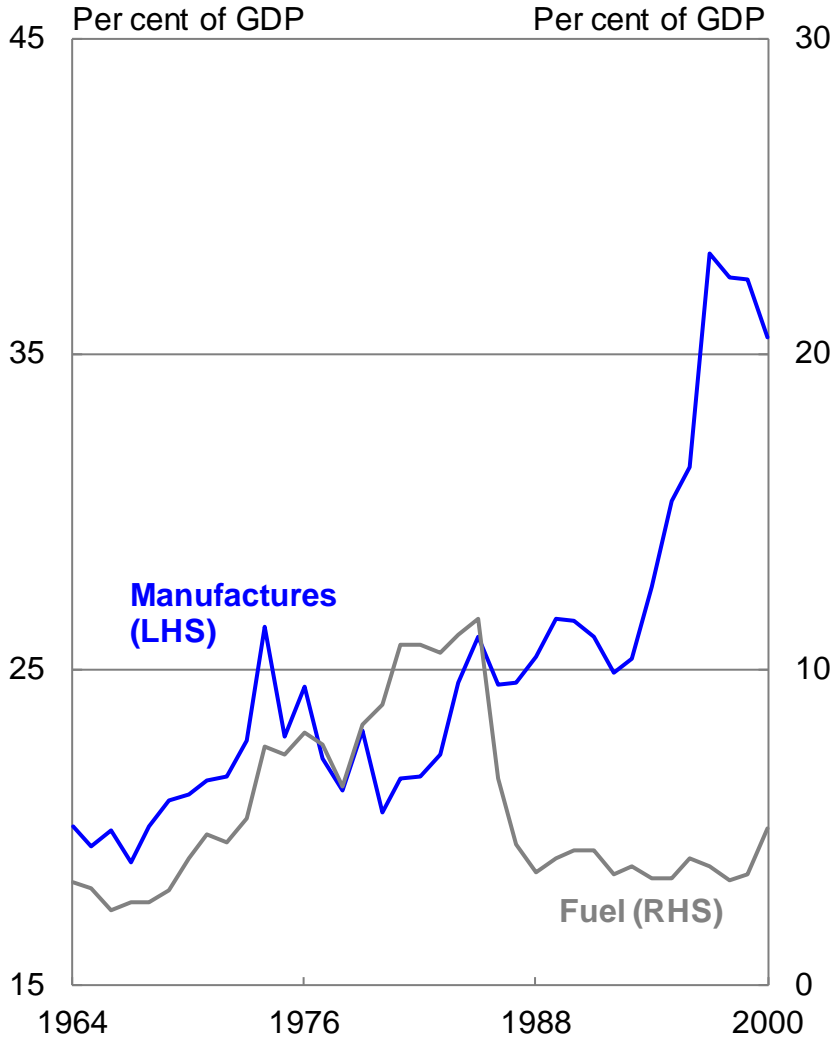


Chart 4: Dutch and Dutch Disease

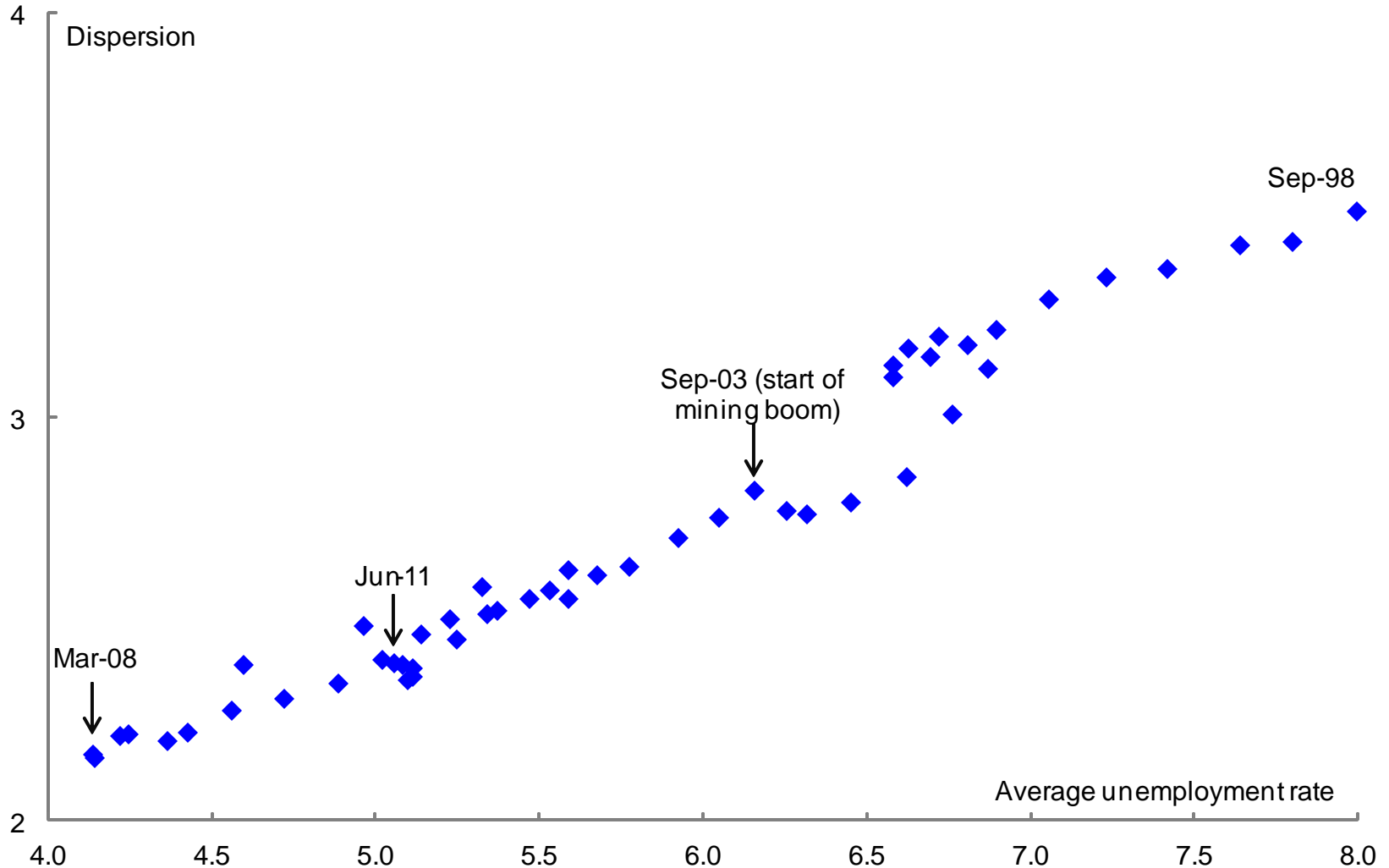
Dutch exports

GDP per capita



Note: Purchasing power parity adjusted GDP.
Source: World Bank World Tables, Conference Board Total Economy Database and Treasury.

Chart 5: Unemployment across the economy



Note: Each point on the scatter plot represents the weighted average and weighted standard deviation of regional unemployment for a particular quarter between Sep-1998 and Jun-2011. The weighted average unemployment rates for all SLAs differ slightly from those estimated in ABS 6202.0. Source: DEEWR Small Area Labour Market database and Treasury.

Chart 6: Increases in business performance over past year by innovation status (2008-09)

